

AI-Powered Learning Systems to Facilitate Equitable K-2 Literacy Education



Olin College
of Engineering



Red Hat



WISE
Boston University

PROBLEM

Inequitable Literacy Education

Literacy fluency rates have declined significantly since the COVID-19 pandemic.

While individualized instruction and child-specific interventions have proven highly effective in addressing this issue, many schools struggle to provide this necessary level of individualized support.

SOLUTION

Independent practice web-app for students.

- Individualized Assessment
- LLM Student Summary
- Intervention Idea Generation
- Statistic Visualization Tool

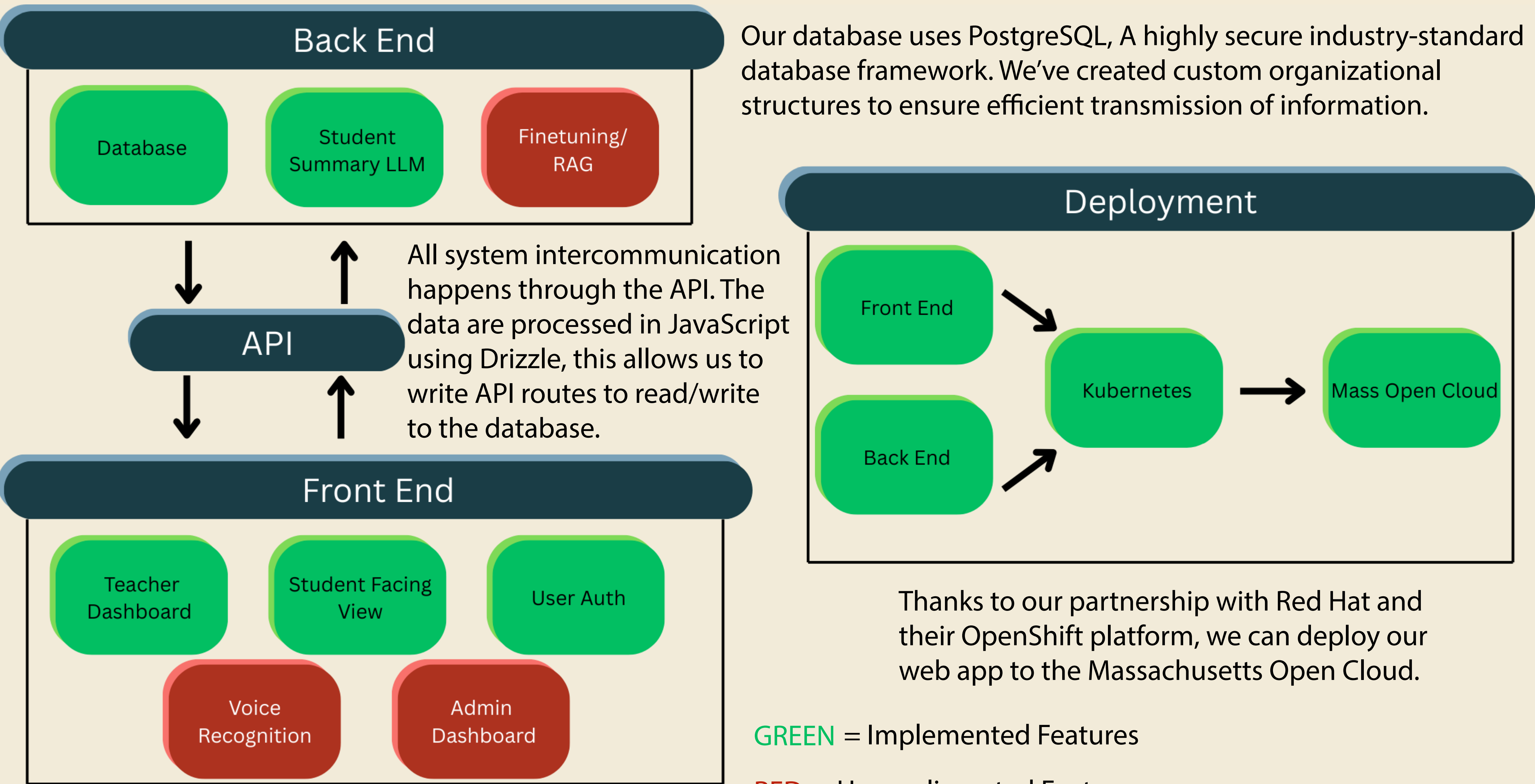
EXPLORATION

42 Interviews

22 Different Liaisons

10 Review sessions

DATA FLOW DIAGRAM



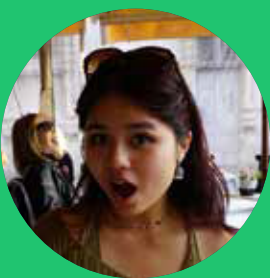
ACKNOWLEDGEMENTS

Thank you to our SCOPE advisor Jessica Townsend, our liaison Eshed Ohn-Bar, important project contributors Lana Edwards Santoro and Isaiah Stapleton, and the members of the Reach Every Reader Team (including Olin's Amon Millner) for their help and support throughout this project.

THE TEAM



Prisha Bhatia



Cherry Pham



Aaron Codrington



Anmol Sandhu



Richard Li